



Your Health  Our Purpose
為你健康 盡力盡心

心臟健康檢查 HEART Health Programme



地址 Address :

香港新界沙田澤祥街9號香港中文大學醫院2樓
2/F, CUHK Medical Centre, 9 Chak Cheung Street,
Shatin, New Territories, Hong Kong

服務時間 Service Hours :

星期一至五 : 9:00 - 17:00

星期六 : 9:00 - 13:00

星期日及公眾假期休息

Monday to Friday : 9:00 - 17:00

Saturday : 9:00 - 13:00

Closed on Sunday and Public Holidays

心臟科中心

Cardiology Centre : (852) 3946 6633

一般查詢

General Enquiries : (852) 3946 6888

電郵 Email : cac@cuhkmc.hk

網址 Website : www.cuhkmc.hk

中大醫院保留更改以上所有條款及細則的權利而毋須另行通知。

如有任何爭議，中大醫院保留最終決定權。

CUHK Medical Centre retains the right to amend any of the above terms and conditions without prior notice. In case of dispute, CUHK Medical Centre reserves the right of final decision.

CUHKMC/SP/HEART/2022/04



 香港中文大學醫院
CUHK
Medical Centre

 CUHK Medical Centre

 @cuhkmedicalcentre

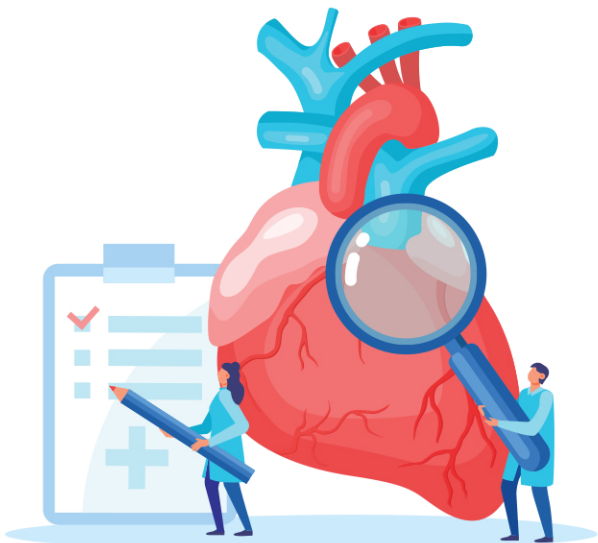
心臟健康檢查計劃 Heart Health Programme

統計數字顯示，自六十年代起，心臟病已是本港第三號殺手。當中更以冠心病為首。於2019年，每天平均約有10.2人因冠心病而死亡*。

由中大醫院心臟專科團隊主理的心臟健康檢查計劃（計劃），希望透過檢查以協助您更適切地關注心臟健康。計劃針對您的需要備有不同選擇，有助及早發現潛在性的心臟問題，促進心臟健康。

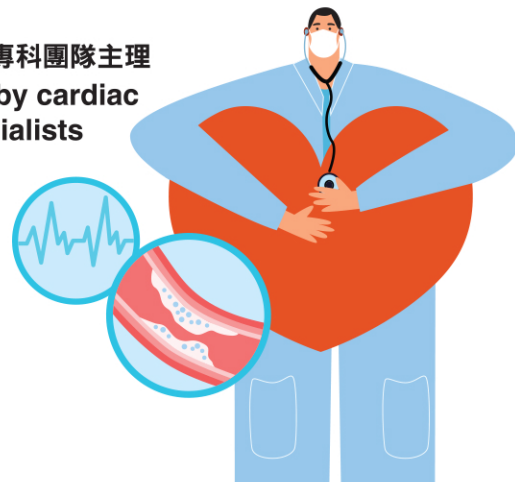
Heart diseases have been the third leading cause of death in Hong Kong since 1960s. Coronary heart disease is the major cause of death among all types. In 2019, about 10.2 persons on average died from coronary heart diseases per day*.

The Heart Health Programme (Programme) is led by CUHKMC cardiac specialists with check-ups for better monitoring your heart health. The Programme is designed to offer you choices in promoting heart health with early detection of potential heart problems.

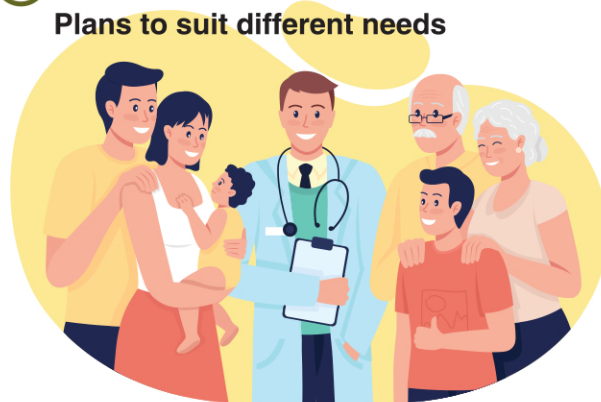


計劃特色 Programme Features

✓ 心臟專科團隊主理
Led by cardiac specialists



✓ 不同計劃選擇符合不同需要
Plans to suit different needs



✓ 心臟專科醫療及教授團隊為後盾
Backup by medical and professorial team in cardiology



心臟健康檢查計劃# 內容和收費

Heart Health Programme# Details & Fee

計劃 (一) PLAN 1

諮詢及評估 Consultation and Assessment

血壓、身高、體重、體重指標 (BMI)、腰圍
Blood Pressure, Height, Body Weight, Body Mass Index (BMI), Waistline
十年ASCVD風險計算 - 10-year ASCVD Risk Assessment

心臟專科醫生會診及解釋報告
Medical Consultation and Report Analysis by Cardiologist

血液檢測 Blood Analysis

血型及Rh因子 - Blood Grouping and Rh Factor
全血計數 - 血色素、白血球、血小板
Complete Blood Count – Hemoglobin, White Blood Cell, Platelet

冠心病風險 Coronary Artery Disease Risk Assessment

全血脂分析 - Lipid Profile
總膽固醇 - Total Cholesterol
高密度膽固醇、低密度膽固醇 - High-density Lipoprotein & Low-density Lipoprotein
非常低密度膽固醇 - Very Low-density Lipoprotein
三酸甘油脂 - Triglycerides

糖尿病評估 Diabetes Assessment

空腹血糖 - Fasting Blood Sugar
糖化血色素 - HbA1c

骨質、肝功能檢驗 Bone, Liver Function Test

總蛋白、白蛋白、球蛋白 - Total Protein, Albumin, Globulin
谷丙轉氨酶 - ALT
丙種谷氨酰轉肽酶 - Gamma GT
鹼性磷酸酶 - Alkaline Phosphatase
谷草轉氨酶 - AST
總膽紅素 - Total Bilirubin
鈣、磷 - Calcium, Phosphorus

腎功能檢驗 Renal Function Test

尿素、肌酸酐 - Urea, Creatinine

痛風檢驗 Gout Screening

尿酸 - Uric Acid

甲狀腺功能測試 Thyroid Function Test

促甲狀腺激素 - TSH

小便常規檢驗 Urinalysis Routine

小便 - 尿液常規檢驗 - Urine Routine

心臟健康評估 Heart Assessment

靜態心電圖 - Resting ECG
運動心電圖 - Exercise Stress (Treadmill) test
24小時心電圖 - 24-hour ECG (Holter) Monitoring
超聲心動圖 - Echocardiogram

收費 (港幣) Fee HKD \$11,850

此健康檢查計劃只適用於新症 # This programme only applies for new cases

計劃 (二) PLAN 2

諮詢及評估 Consultation and Assessment

血壓、身高、體重、體重指標 (BMI)、腰圍
Blood Pressure, Height, Body Weight, Body Mass Index (BMI), Waistline

心臟專科醫生會診及解釋報告
Medical Consultation and Report Analysis by Cardiologist

心臟健康評估 Heart Assessment

運動心電圖 - Exercise Stress (Treadmill) test
24小時心電圖 - 24-hour ECG (Holter) Monitoring
超聲心動圖 - Echocardiogram

收費 (港幣) Fee HKD \$9,800

此健康檢查計劃只適用於新症 # This programme only applies for new cases